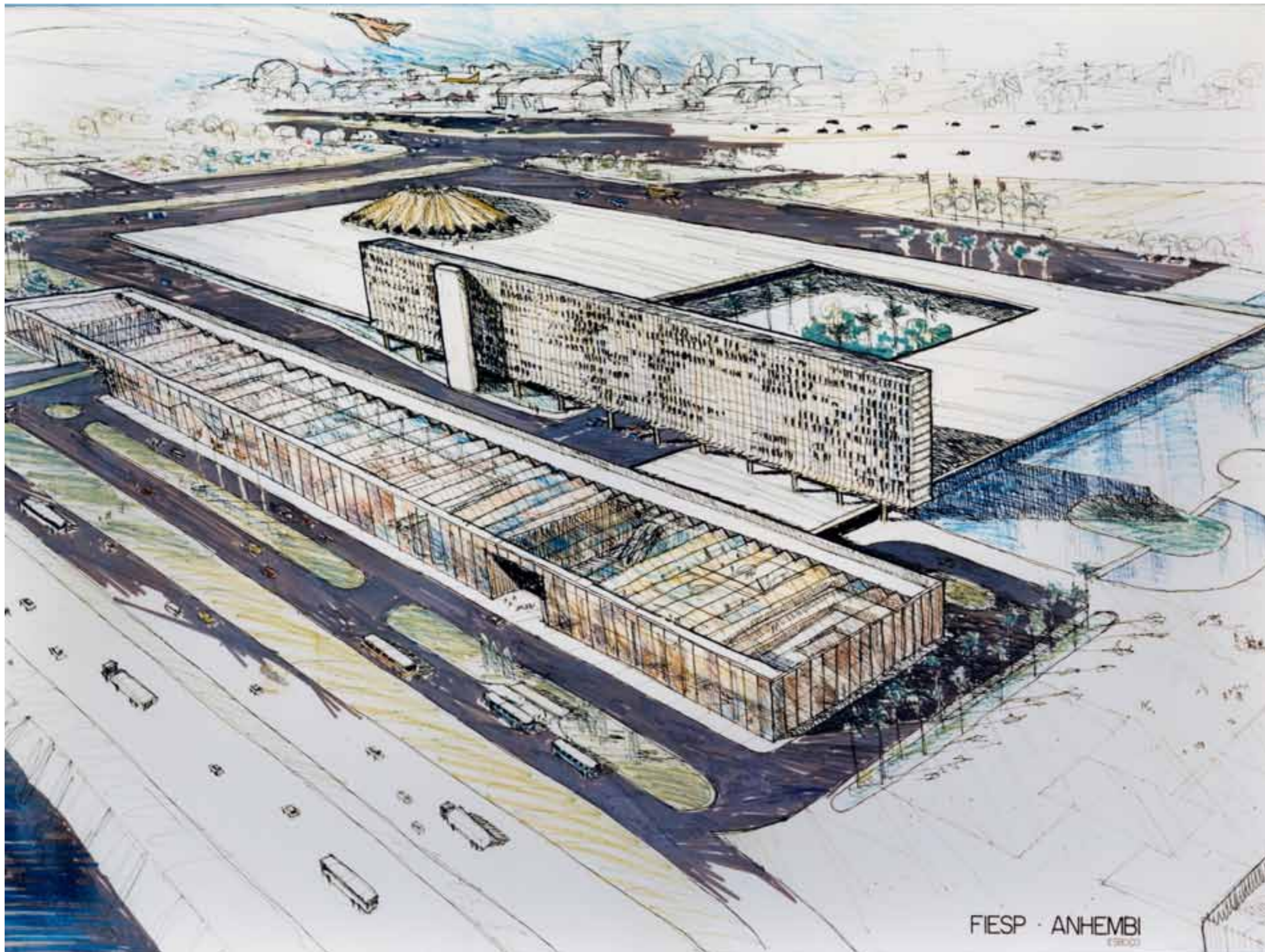


Em meados da década de 1980, o Anhembi negociou com a Federação das Indústrias do Estado de São Paulo o terreno ao lado do Palácio das Convenções.

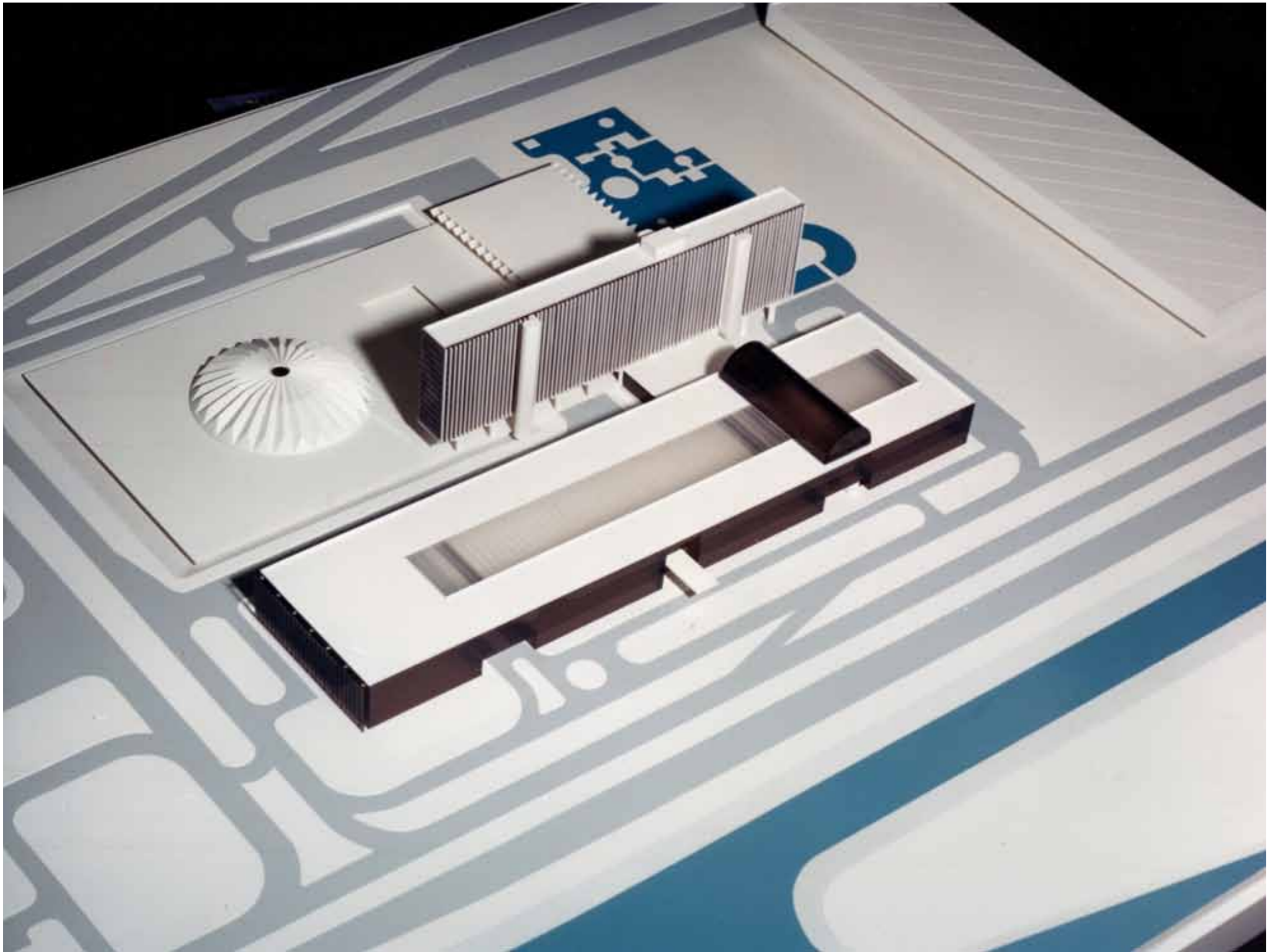
A FIESP encomendou ao escritório de Miguel Juliano, o arquiteto responsável pelo Palácio, um projeto para a implantação no local de um conjunto de edificações que abrigariam CIESP, SESI, SENAI e diversos sindicatos.

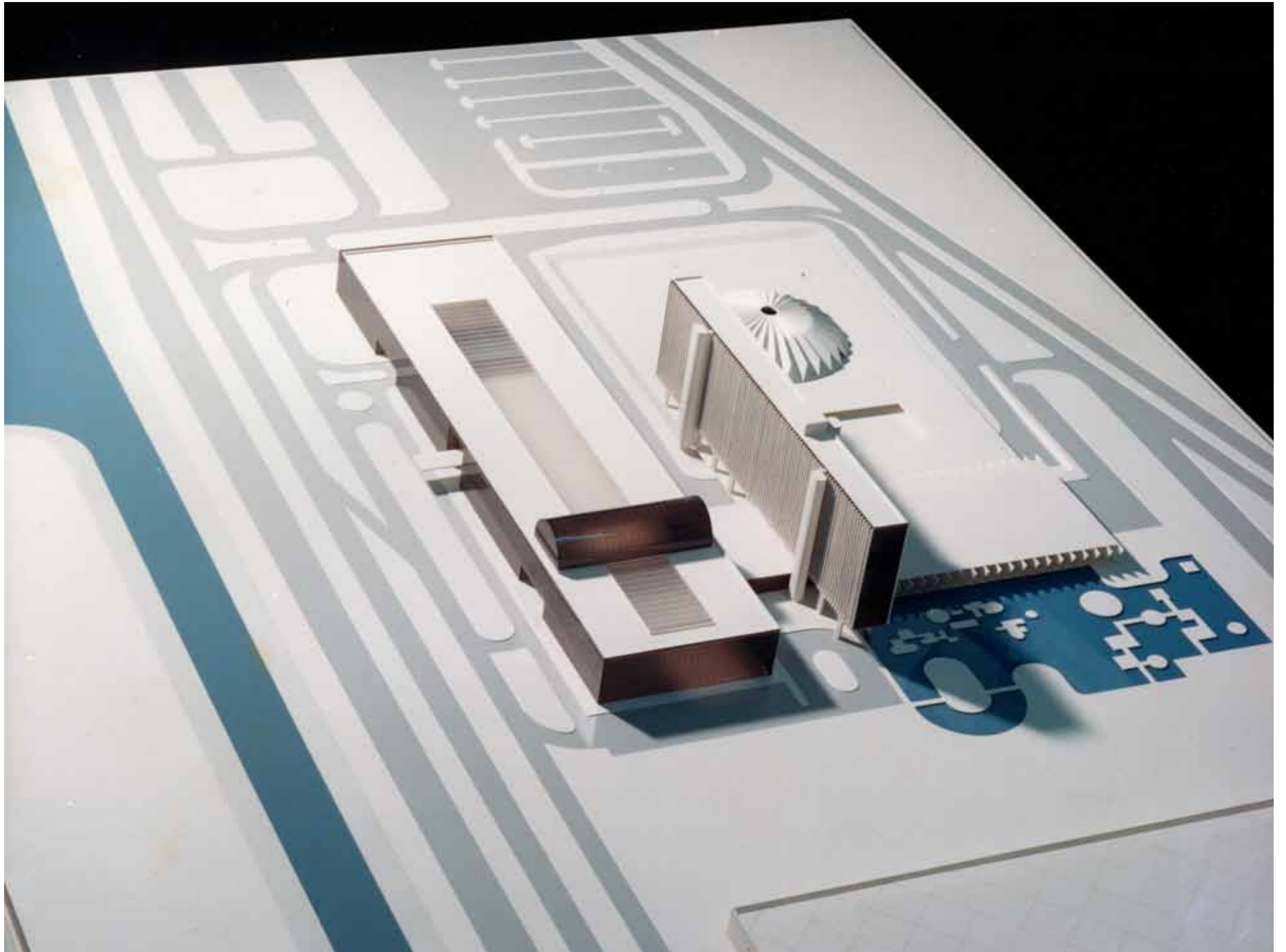
Como o acordo foi posteriormente contestado pela administração municipal, as obras não aconteceram.

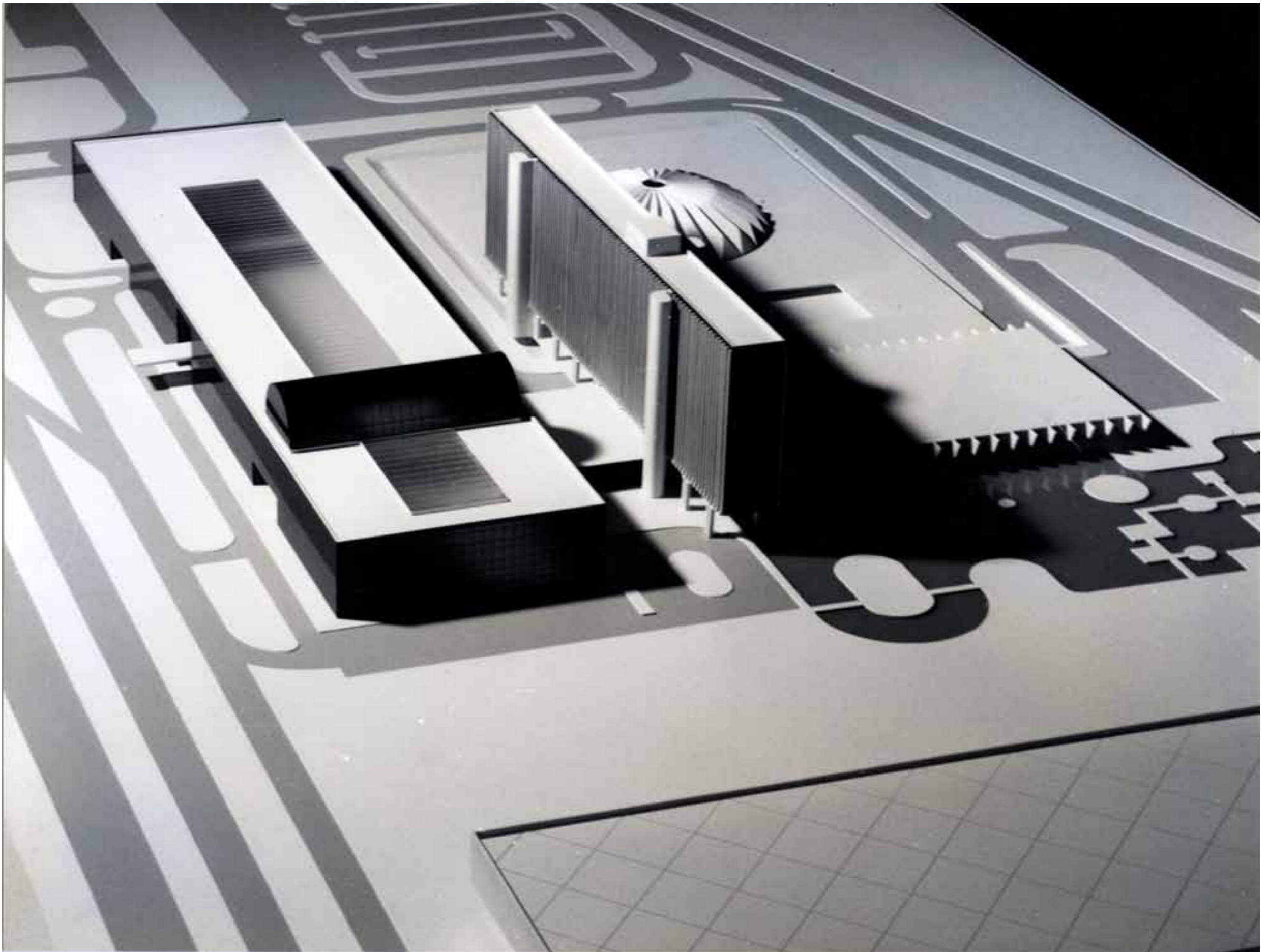


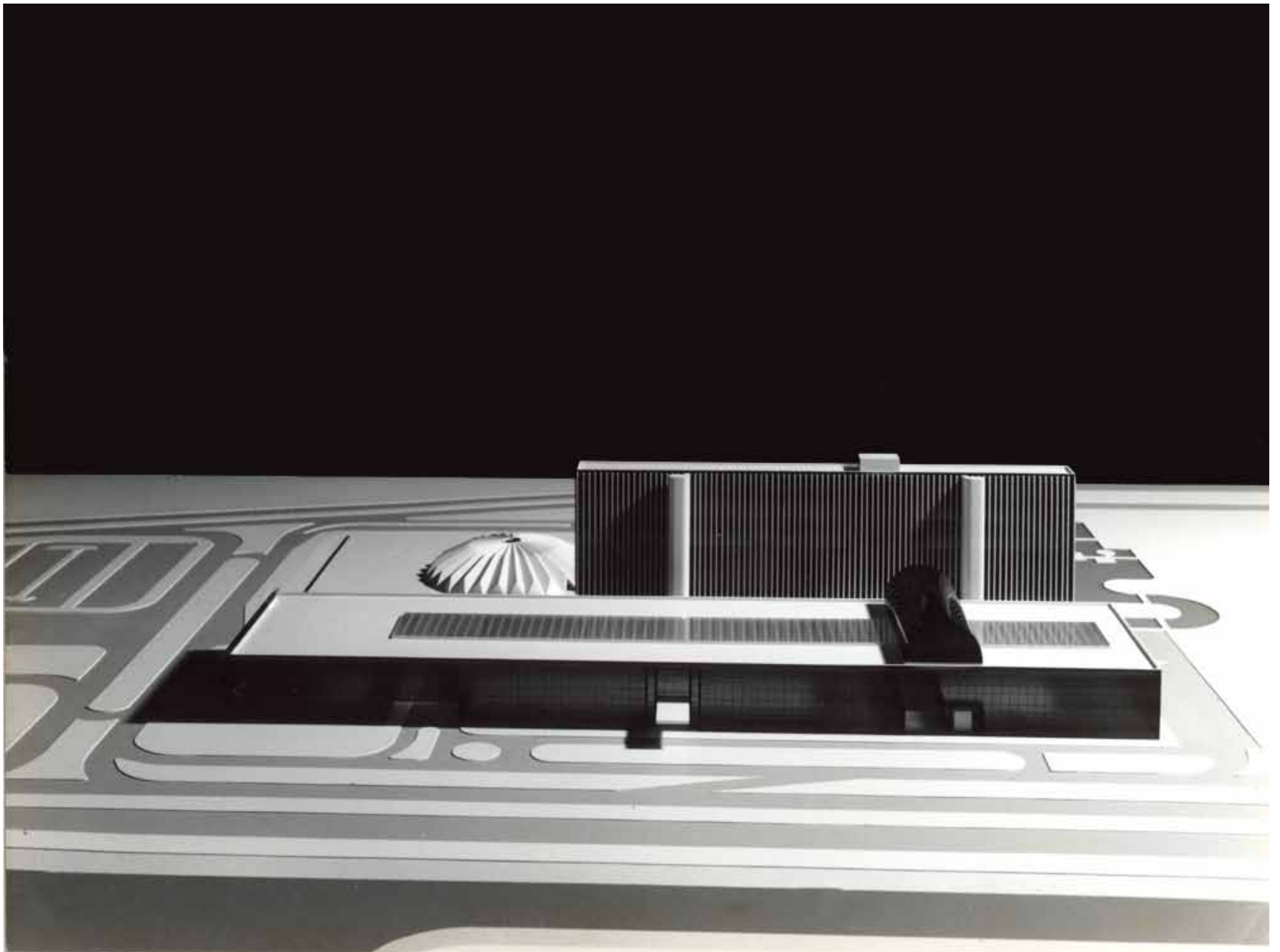


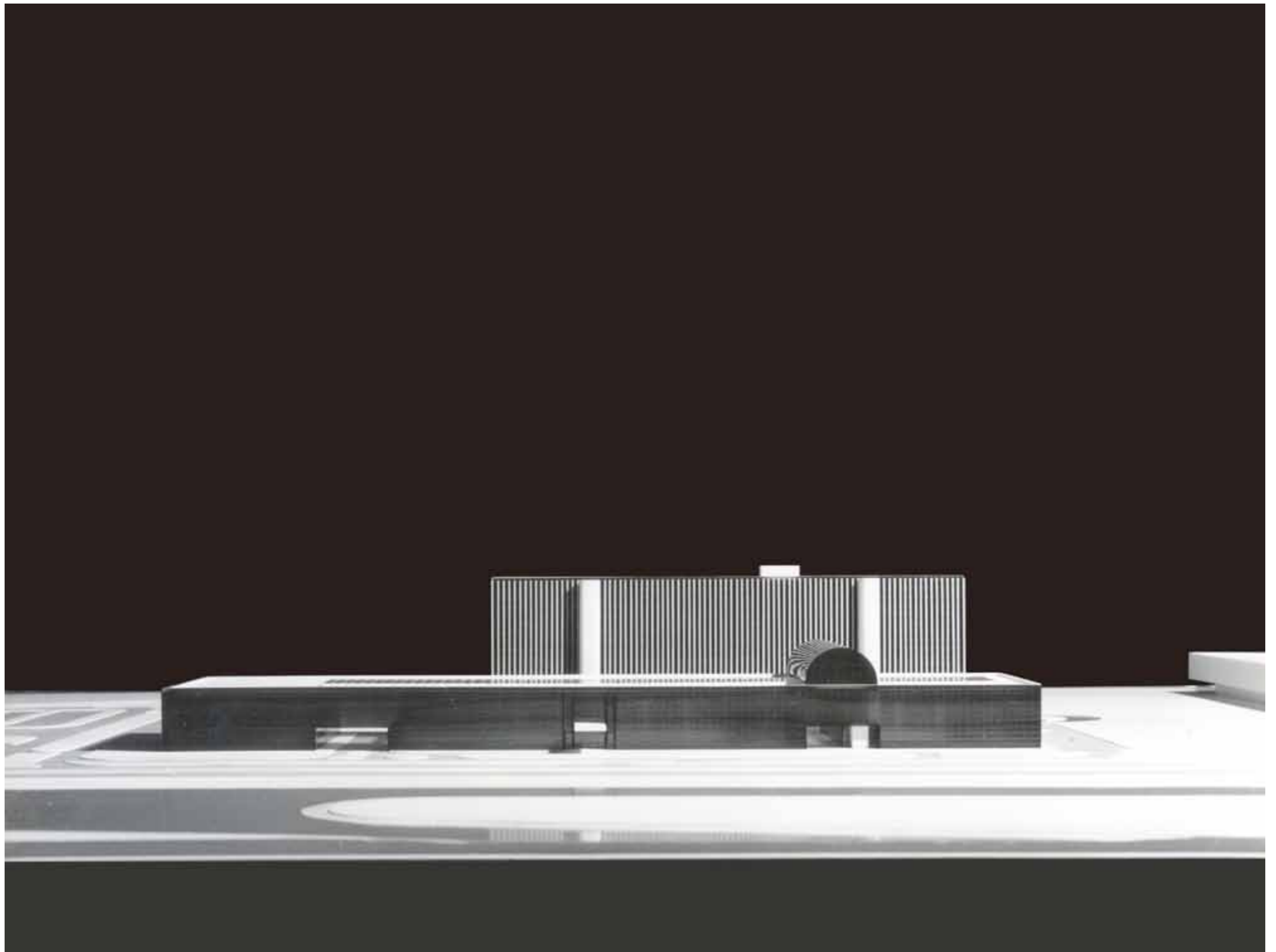
FIESP · ANHEMBI  
(1960)

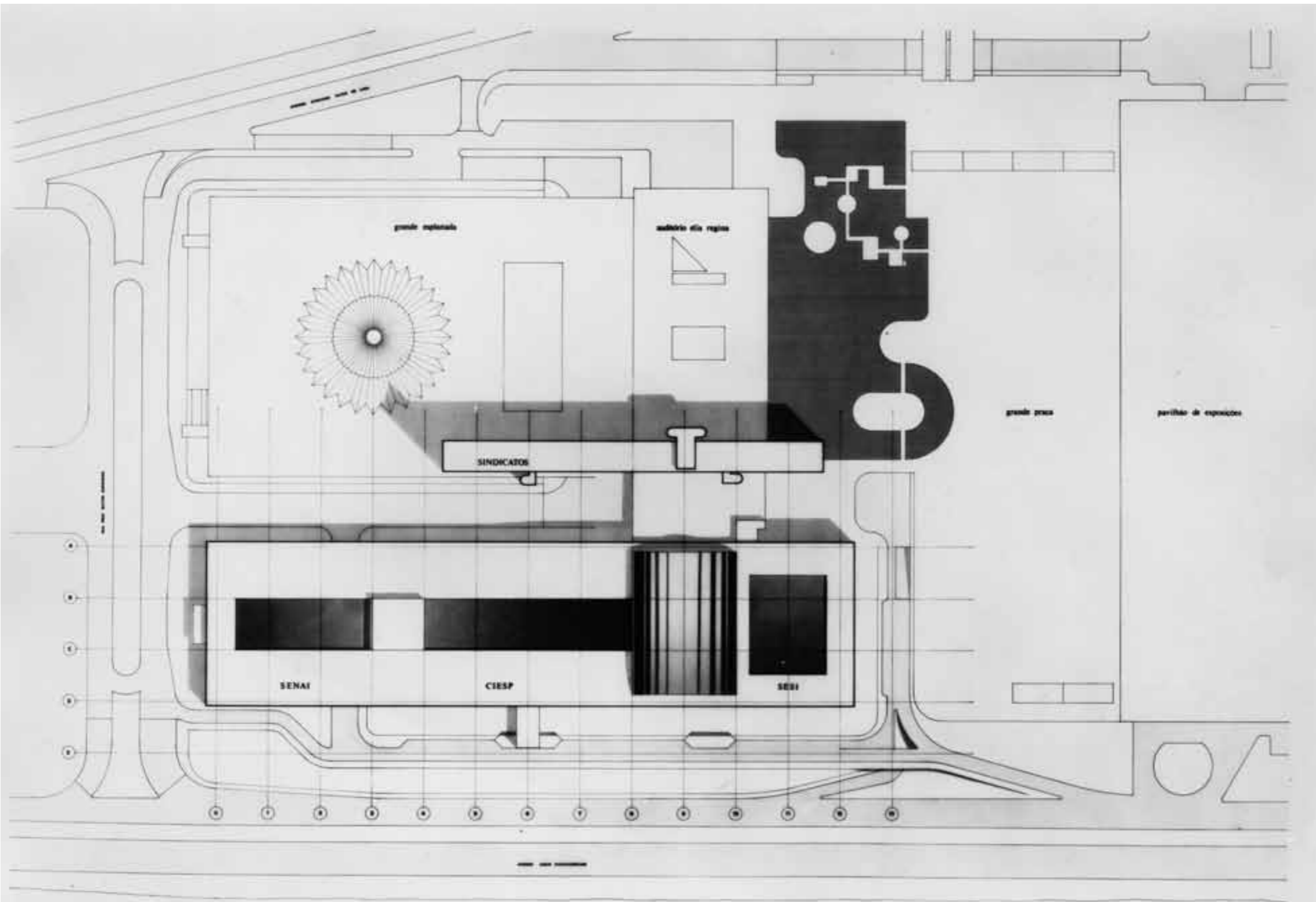




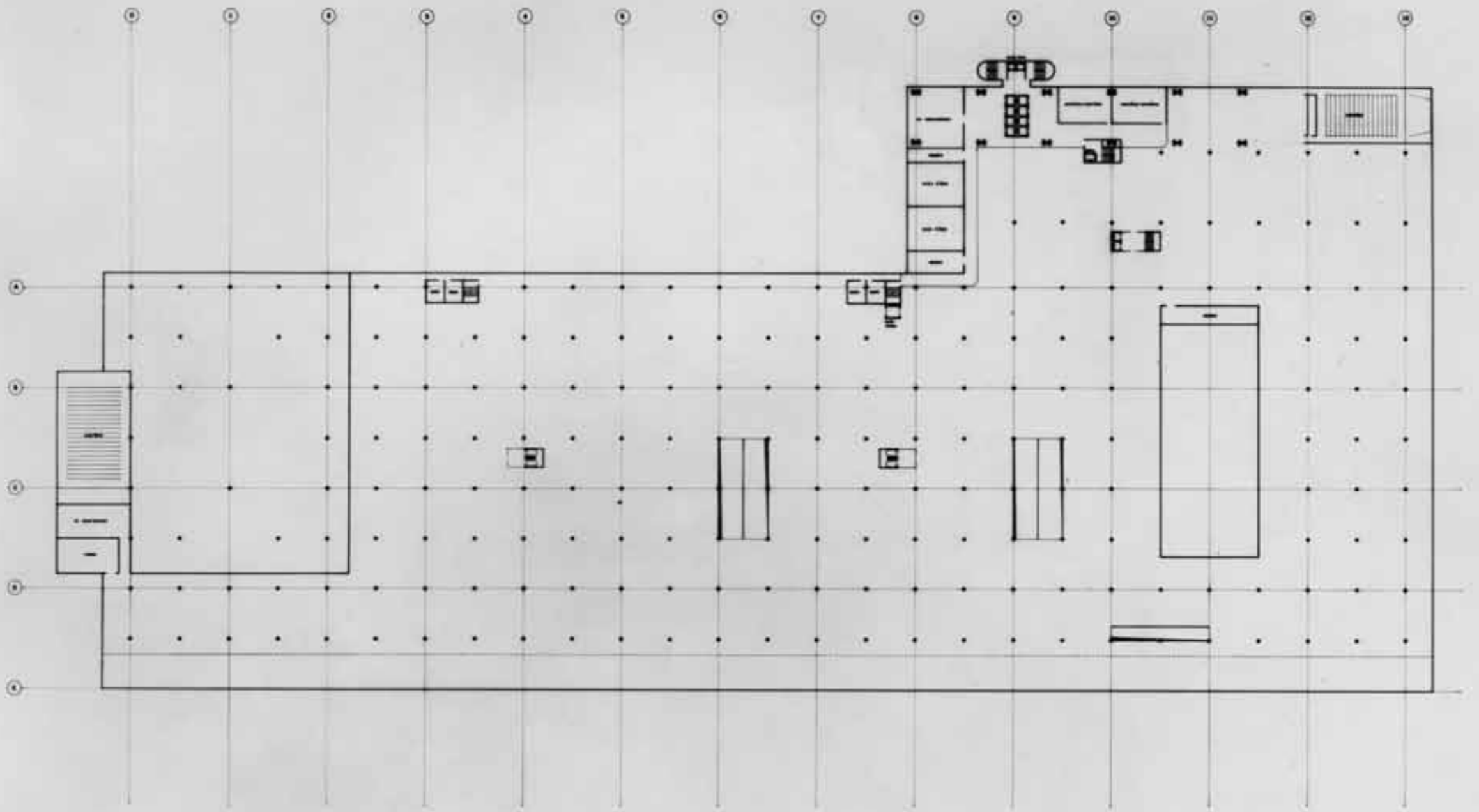


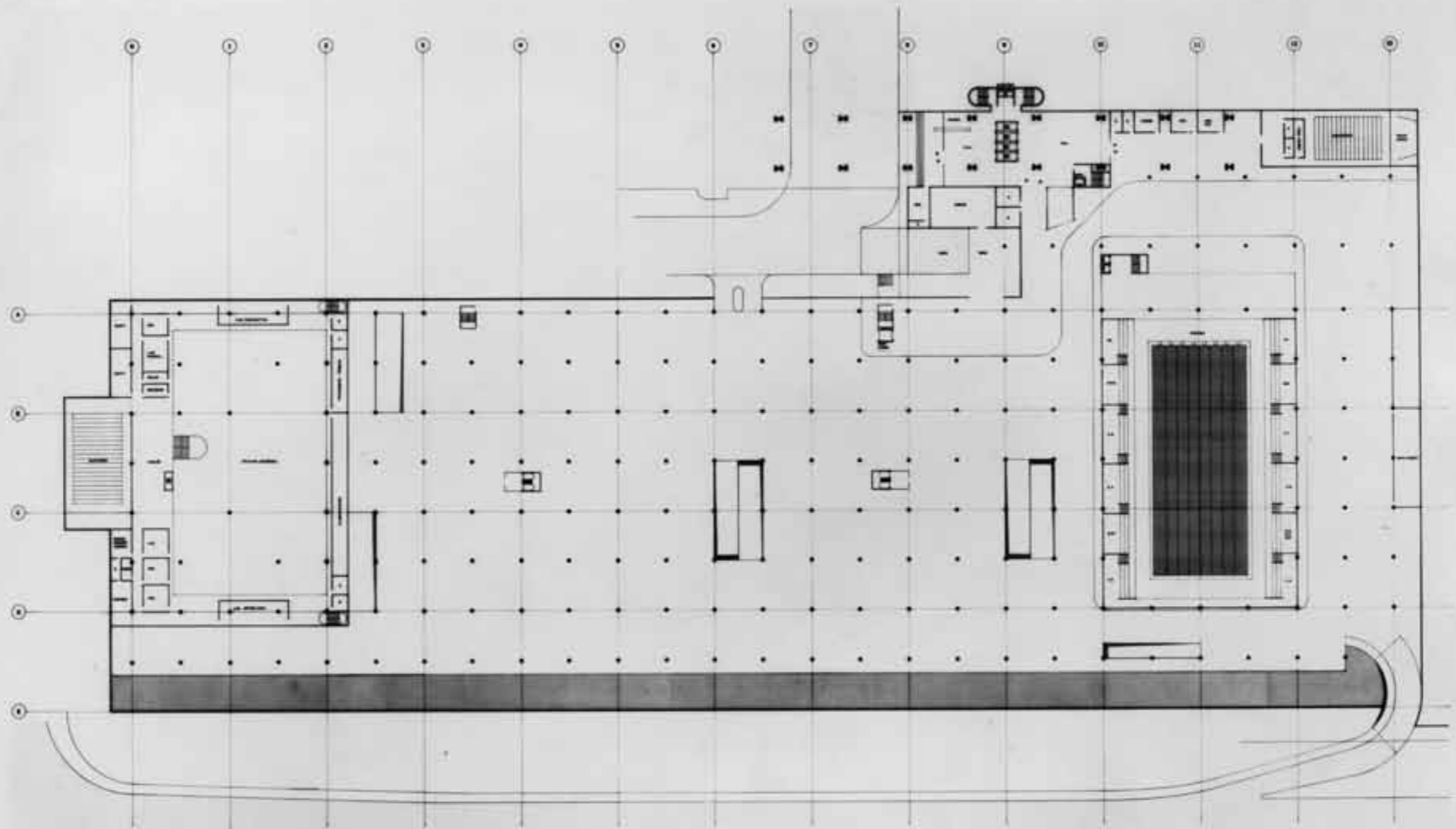


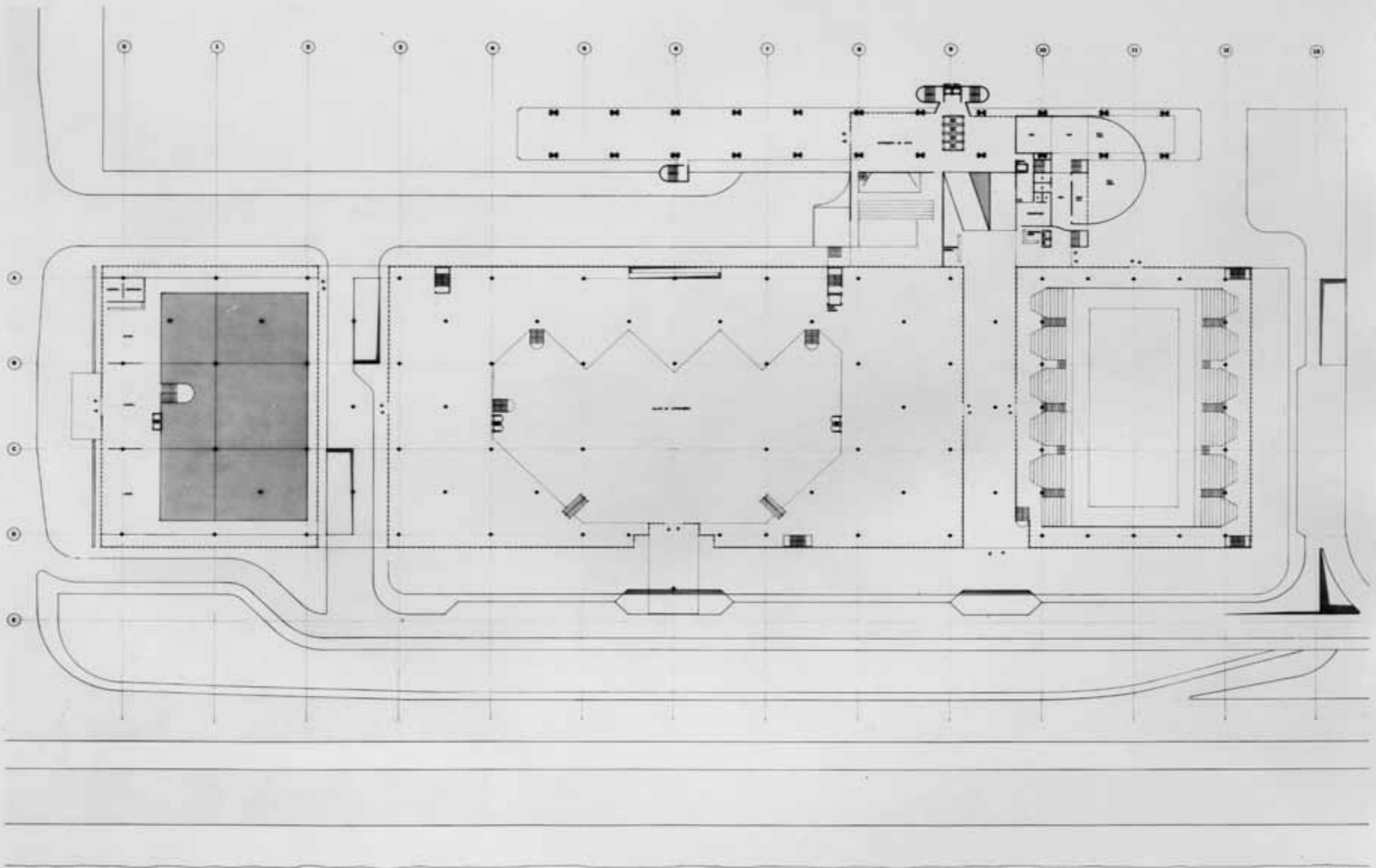


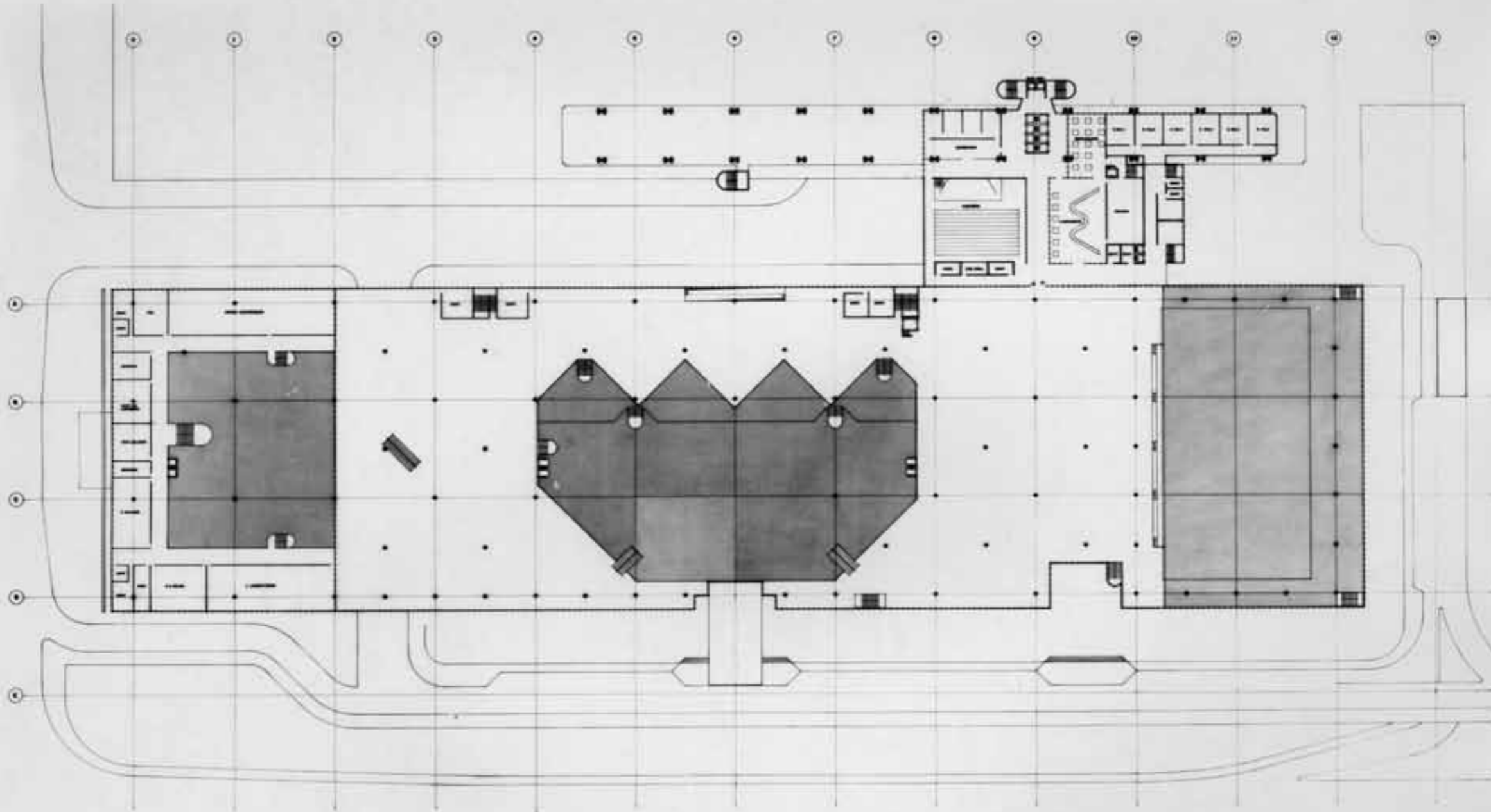


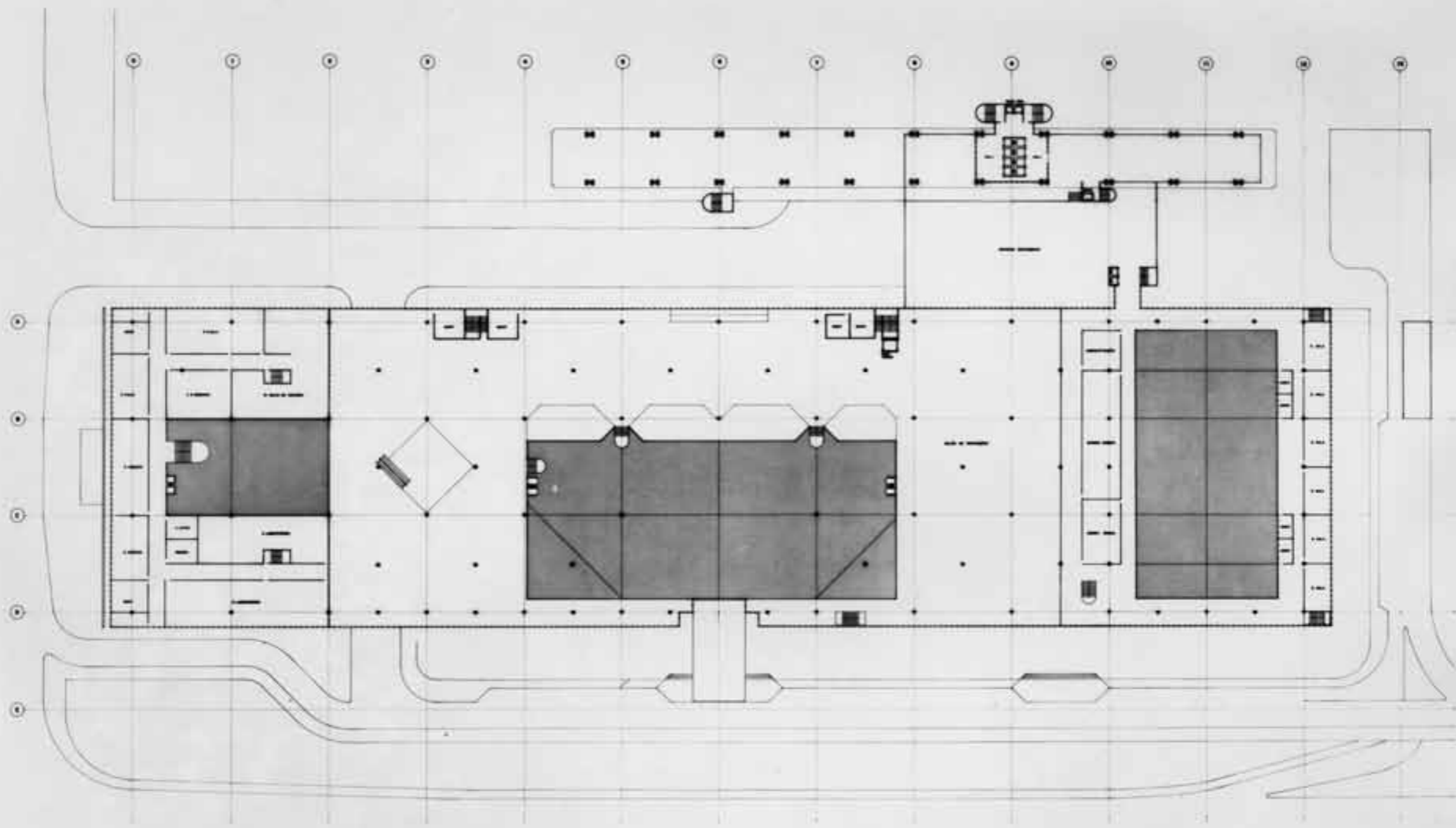


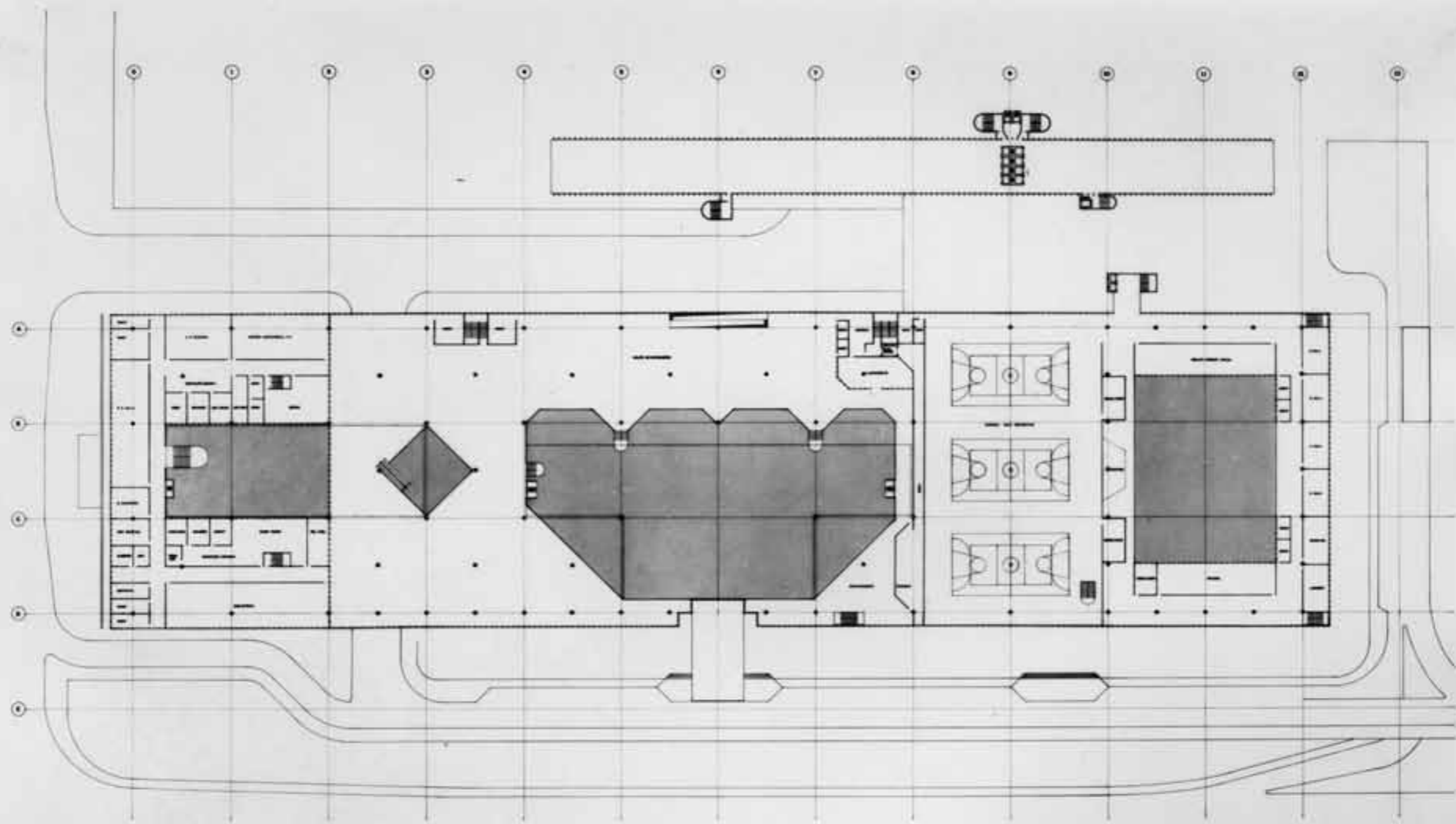


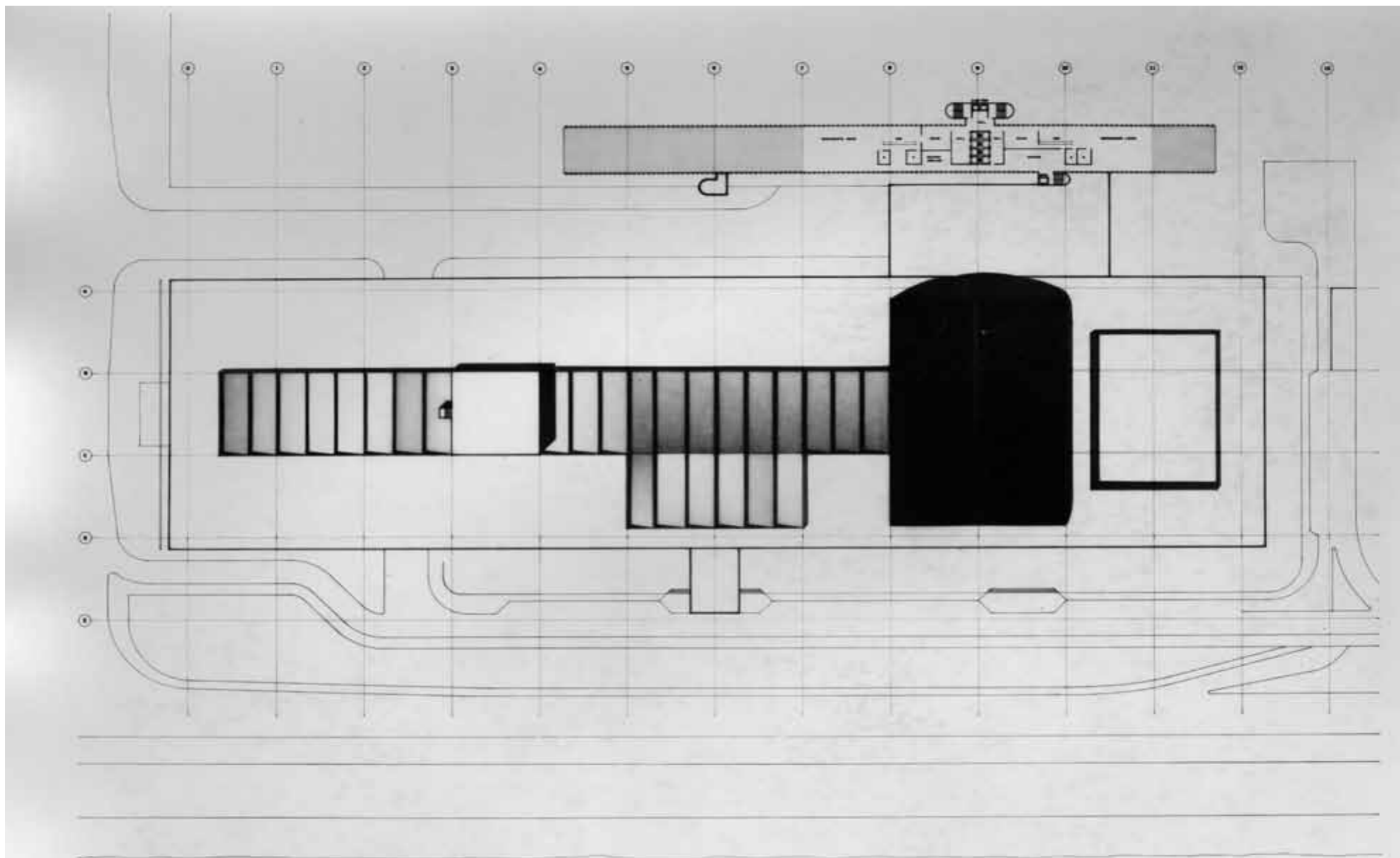


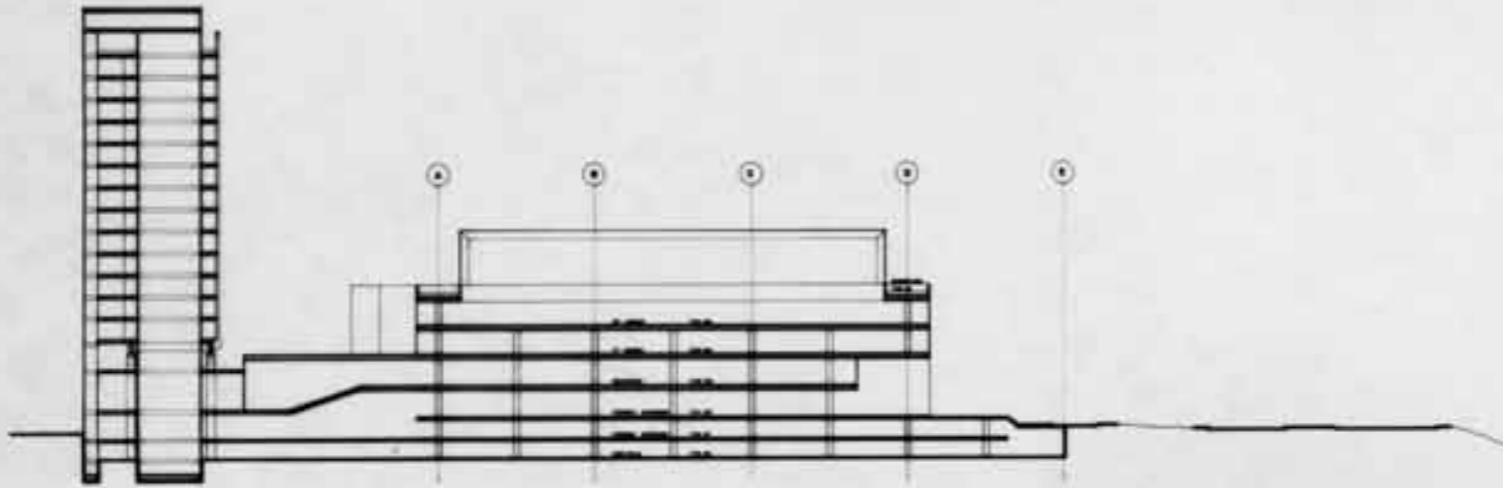




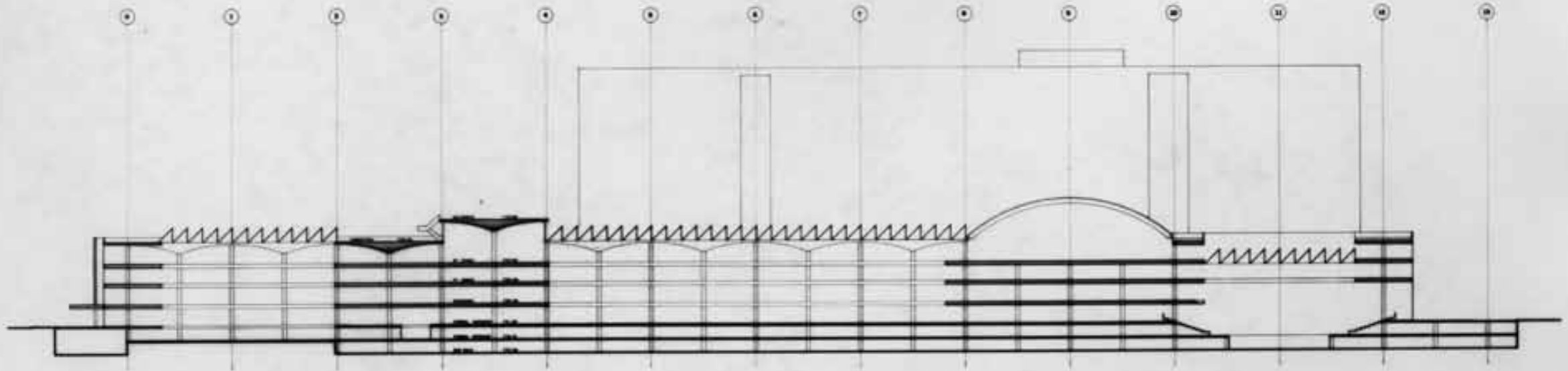






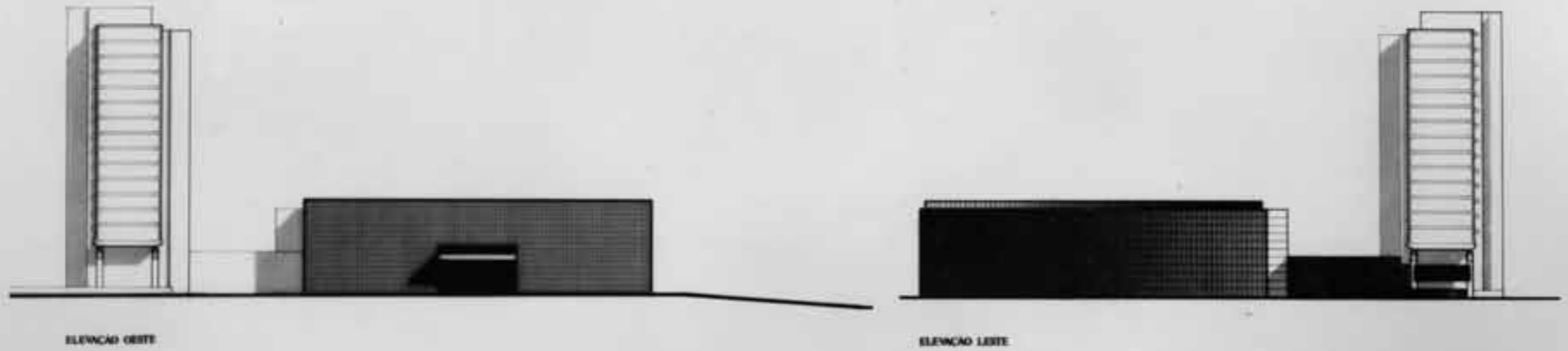


CORTE TRANSVERSAL



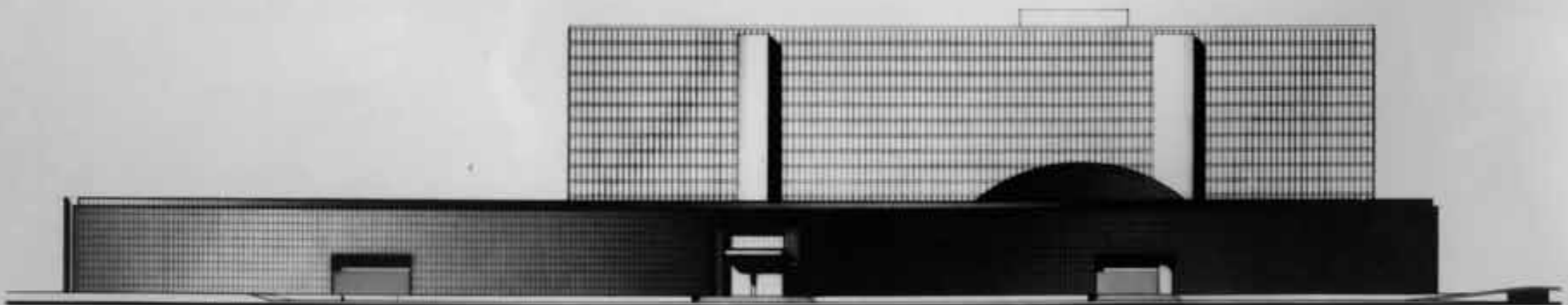
CORTE LONGITUDINAL





ELEVACAO OESTE

ELEVACAO LESTE



ELEVACAO SU



CIESP SESI SENAI SINDICATOS • ANHEMBI ANTEPROJETO

Miguel  
arquitetos juliano scl